

Proposed Development at Land off Tickow Lane, Black Brook, Shepshed

The proposed development by William Davis Limited will comprise up to 325 new homes, including 30% affordable homes, as well as provision for a new primary school.

CONSTRUCTION PHASE

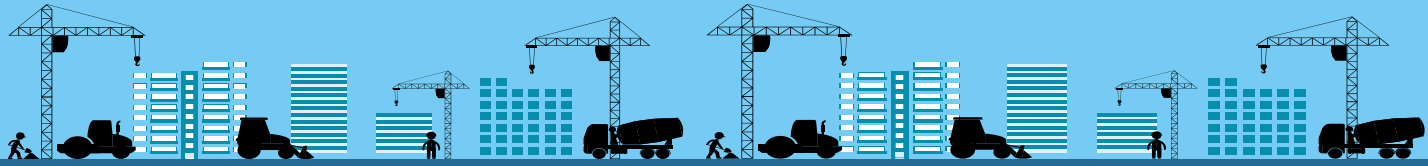
(Associated with delivery of the development over an 8 year construction period)

**23 FTE
Local Jobs**

**£23m
Local Economic Output
Over Construction Period**

**39 FTE
Regional/ UK Jobs**

**£40m
Total Economic Output
Over Construction Period**



OPERATIONAL PHASE

**770 people
New resident population**

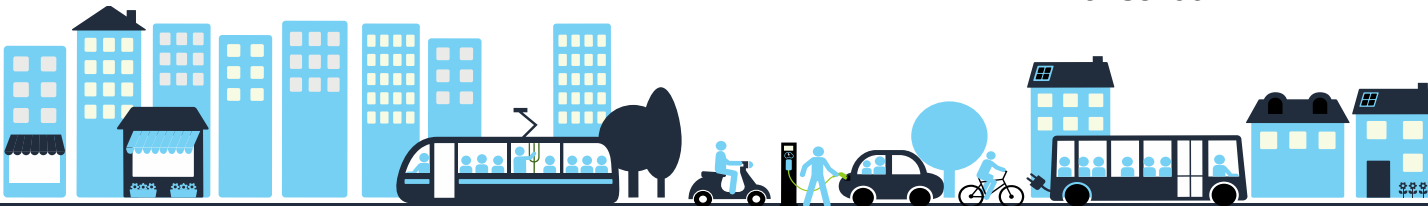
**£4.7m per annum
Local Economic Output
of New Residents**

**42
Primary school jobs
(assuming 2 form entry)**

**£5.2m per annum
Residents Expenditure on Local
Retail and Services**

**£9.8m per annum
Total Economic Output
of New Residents**

**Plus further supply
chain jobs associated
with school**



LOCAL AUTHORITY REVENUE

**£648k per annum
Council Tax**

**£625k single payment
New Homes Bonus**

Plus Section 106 financial contributions

